

## G-RAIL 2060 Welded Rail Clips

### TECHNICAL SPECIFICATIONS

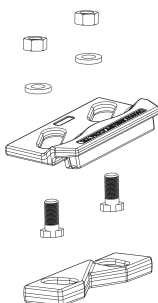
- Max side load 250 kN
- Lateral adjustment 16 mm
- Bolt M20 Grade 8.8
- Tightening Torque 300 Nm
- Steel Quality St52-3

CLIPS NO	X	C	W	N	Weight (Kg)
G-RAIL 2060/30/14	20	30	30	14	2,350
G-RAIL 2060/30/17	20	30	30	17	2,385
G-RAIL 2060/30/20	20	30	30	20	2,405
G-RAIL 2060/34/14	24	34	34	14	2,565
G-RAIL 2060/34/17	24	34	34	17	2,600
G-RAIL 2060/34/20	24	34	34	20	2,620

### MAIN FEATURES

1. G-RAIL 2060 welded rail clips, which are produced from 2 forged parts as upper and lower enables ease of assembly thanks to its special desing.
2. The clips can preferred for rails with or without pads.
3. The two main parts are locked together with special bolt.
4. The rubber nose increases the tolerances of the rail support structures, reduces the stress of the connections, allows a better fixing of the rail.

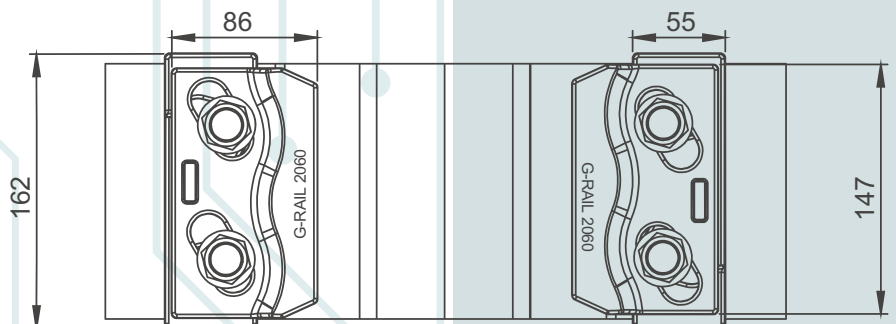
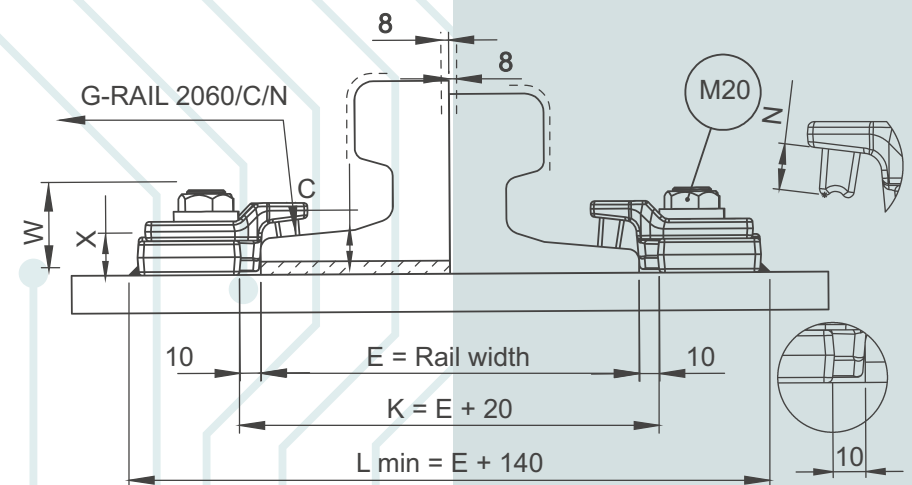
### COMPONENTS

- 
- ① Nut and washer M20
  - ② Upper clip with rubber nose
  - ③ Special bolt M20
  - ④ Weldable lower clip

Flange nut can also be used on request.  
Please consult us for using flange nut.

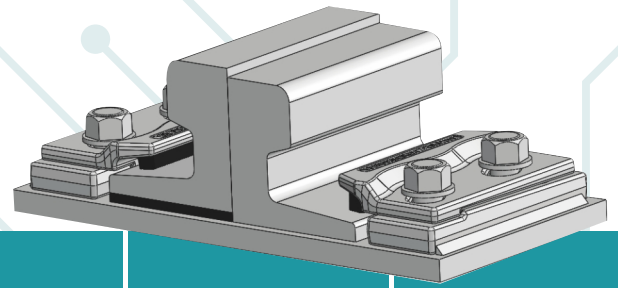
### 1 RAIL WITH PAD

### 2 RAIL WITHOUT PAD



# 2060

## G-RAIL 2060 Welded Rail Clips



	A	B	E	Weight kg/m	Without Pad	With Pad
						
A65	65	75	175	43,1	2060	2060 P
A75	75	85	200	56,2	2060	2060 P
A100	100	95	200	74,3	2060	2060 P
A120	120	105	220	100	2060	2060 P
A150	150	150	220	150,3	2060	2060 P
CR 104	63,5	127	127	51,59	2060	2060 P
CR 105	65,1	131,8	131,8	52,09	2060	2060 P
CR 135	76,2	146	146	66,97	2060	2060 P
CR 171	101,6	152,4	152,4	84,83	2060	2060 P
CR175	102,4	152,4	152,4	86,8	2060	2060 P
MRS 87 A	101,6	152,4	152,4	86,8	2060	2060 P
MRS 125	120	180	180	125	2060	2060 P
49 E1	67	149	125	49,39	2060	2060 P
50 E1	67	148	135	49,9	2060	2060 P
54 E1	70	159	140	54,77	2060	2060 P
60 E1	72	172	150	60,21	2060	2060 P

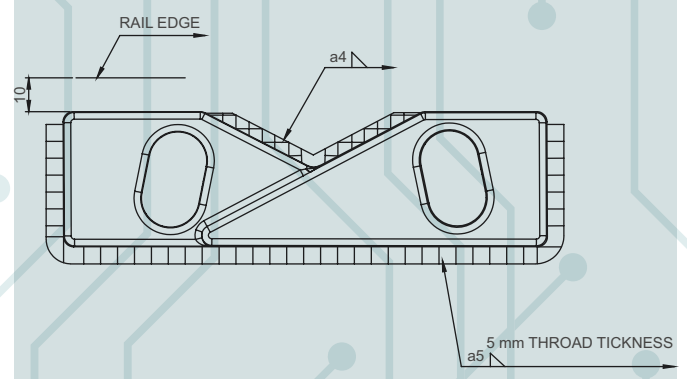
CLIP CAN BE USED WITH MORE TYPE OF RAILS THAN THOSE LISTED.

### INSTALLATION INSTRUCTIONS:

Weld all round the clip base, except the side closest and parallel to the rail with a 5 mm throat thickness fillet weld, using low hydrogen electrodes. Recommended electrodes AWS E7018 or E7028. Clip base is made from weldable grade steel. Please consult us for continuous welding requirement.

ELEKTRODE  
 AWS A5.11-04 E7018-1  
 EN ISO 2560-A E42 4 B42 H5  
 CE EN13479  
 ROD  
 AWS A5.18 ER70S-6: SG3  
 EN ISO 1668 W 4Si1: SG3

### WELD DETAIL



## G-RAIL NO DOUBT ABOUT CRANE RAILS AND FASTENING SYSTEM



Przedstawiciel handlowy w Polsce:

DETRANS  
 ul. Damrota 2  
 41-800 Zabrze,  
 NIP: 6482772915

Jacek Kohn  
 Telefon: +48 511 973 972  
 E-mail: j.kohn@detrans.pl

