

G-RAIL 6010 Welded Rail Clips

TECHNICAL SPECIFICATIONS


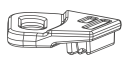

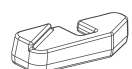
- Max side load 120 kN
- Lateral adjustment 14 mm
- Bolt M16 Grade 8.8
- Tightening Torque 175 Nm
- Steel Quality St52-3

CLIPS NO	X	C	W	N	Weight (Kg)
G-RAIL 6010 K/25/10	23	25	49	10	0,870
G-RAIL 6010 /32/12	23	32	49	12	0,880
G-RAIL 6010 /32/21	23	32	49	21	0,885

MAIN FEATURES

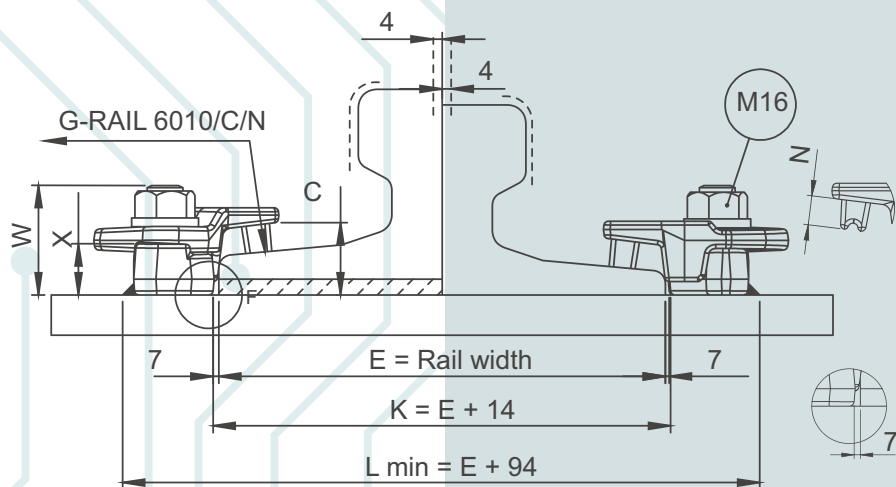
1. G-RAIL 6010 welded rail clips, which are produced from 2 forged parts as upper and lower enables ease of assembly thanks to its special desing.
2. The clips can preferred for rails with or without pads.
3. The two main parts are locked together with special bolt.
4. The rubber nose increases the tolerances of the rail support structures, reduces the stress of the connections, allows a better fixing of the rail.

COMPONENTS

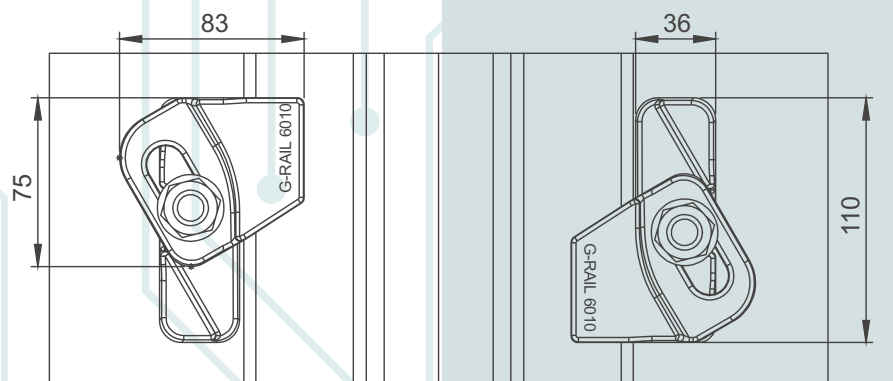
- 
- ① Nut and washer M16
- 
- ② Upper clip with rubber nose
- 
- ③ Special bolt M16
- 
- ④ Weldable lower clip

**Flange nut can also be used on request.
Please consult us for using flange nut.**

1 RAIL WITH PAD

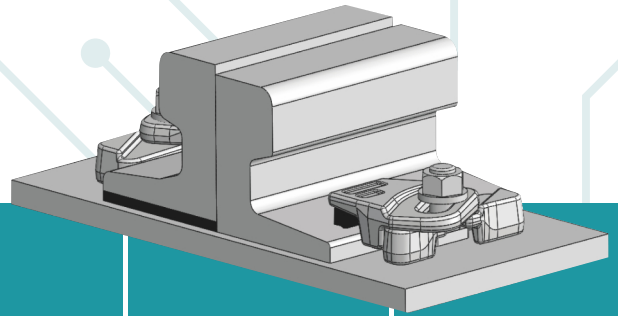


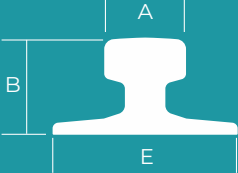
2 RAIL WITHOUT PAD



6010

G-RAIL 6010 Welded Rail Clips



	A	B	E	Weight kg/m	Without Pad	With Pad
A45	45	55	125	22,10	6010	6010 P
A55	55	65	150	31,80	6010	6010 P
A65	65	75	175	43,10	6010	6010 P
A75	75	85	200	56,20	6010	6010 P
A100	100	95	200	74,30	6010	6010 P
A120	120	105	200	100	6010	6010 P
CR73	100	135	140	73,30	6010	6010 P
CR100	120	150	155	100,20	6010	6010 P
49 E1	67	149	125	49,39	6010	6010 P
S49	67	149	125	49,43	6010	6010 P
UIC 60	72	172	150	60,21	6010	6010 P
KP70	70	120	120	46,1	6010	6010 P
KP80	80	130	130	63,61	6010	6010 P
KP100	100	150	150	80,60	6010	6010 P
KP120	120	170	170	109	6010	6010 P
MRS52	65,1	131,8	131,8	52,09	6010	6010 P
MRS67	79,4	146,1	131,8	66,97	6010	6010 P
MRS85	101,6	152,4	152,4	84,83	6010	6010 P
MRS87A	101,6	152,4	152,4	86,80	6010	6010 P
MRS87B	102,4	152,4	152,4	86,80	6010	6010 P

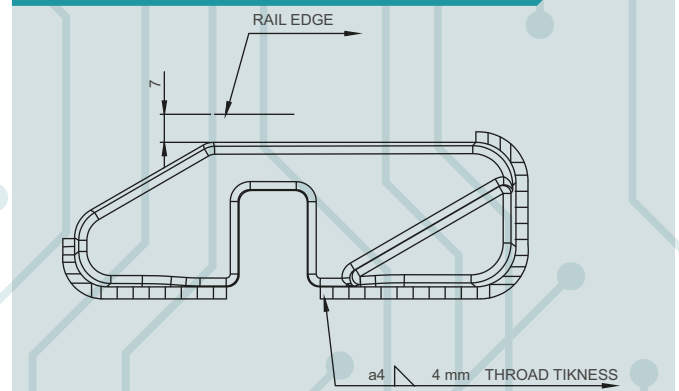
CLIP CAN BE USED WITH MORE TYPE OF RAILS THAN THOSE LISTED.

INSTALLATION INSTRUCTIONS:

Weld all round the clip base, except the side closest and parallel to the rail with a 5 mm throat thickness fillet weld, using low hydrogen electrodes. Recommended electrodes AWS E7018 or E7028. Clip base is made from weldable grade steel. Please consult us for continuous welding requirement.

ELEKTRODE
 AWS A5.11-04 E7018-1
 EN ISO 2560-A E42 4 B42 H5
 CE EN13479
 ROD
 AWS A5.18 ER70S-6: SG3
 EN ISO 1668 W 4Si1: SG3

WELD DETAIL



G-RAIL NO DOUBT ABOUT CRANE RAILS AND FASTENING SYSTEM



Przedstawiciel handlowy w Polsce:

DETRANS
 ul. Damrota 2
 41-800 Zabrze,
 NIP: 6482772915

Jacek Kohn
 Telefon: +48 511 973 972
 E-mail: j.kohn@detrans.pl

