

G-RAIL 1060 Welded Rail Clips

TECHNICAL SPECIFICATIONS


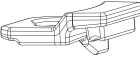


- Max side load 150 kN
- Lateral adjustment 14 mm
- Bolt M20 Grade 8.8
- Tightening Torque 300 Nm
- Steel Quality St52-3

CLIPS NO	X	C	W	N	Weight (Kg)
G-RAIL 1060/27/10,5	19	27	55	10,5	1,020
G-RAIL 1060/27/13	19	27	55	13	1,040
G-RAIL 1060/27/16,5	19	27	55	16,5	1,100

MAIN FEATURES

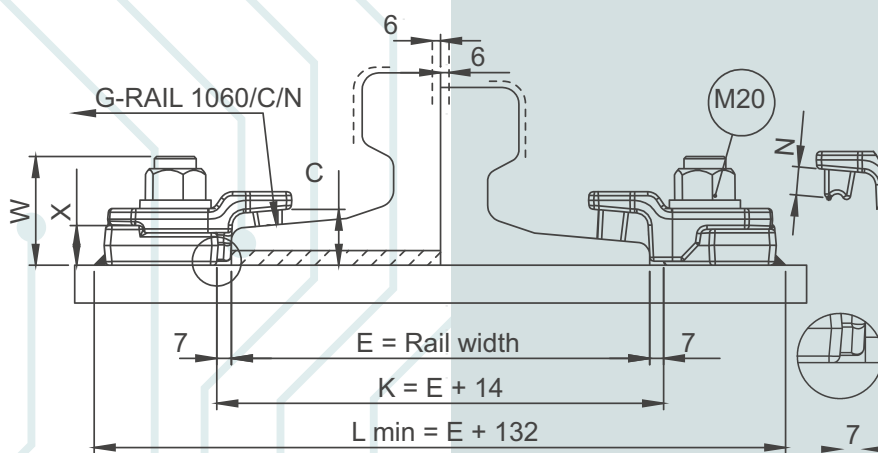
1. G-RAIL 1060 welded rail clips, which are produced from 2 forged parts as upper and lower enables ease of assembly thanks to its special desing.
2. The clips can preferred for rails with or without pads.
3. The two main parts are locked together with special bolt.
4. The rubber nose increases the tolerances of the rail support structures, reduces the stress of the connections, allows a better fixing of the rail.

COMPONENTS

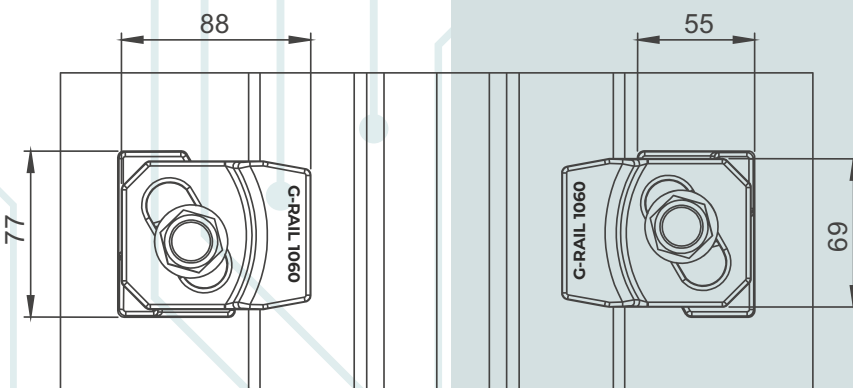
- 
- ① Nut and washer M20
- 
- ② Upper clip with rubber nose
- 
- ③ Special bolt M20
- 
- ④ Weldable lower clip

Flange nut can also be used on request.
Please consult us for using flange nut.

1 RAIL WITH PAD

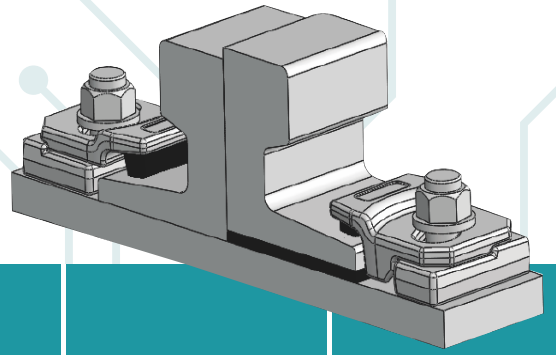


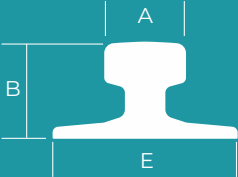
2 RAIL WITHOUT PAD



1060

G-RAIL 1060 Welded Rail Clips



	A	B	E	Weight kg/m	Without Pad	With Pad
A65	65	75	175	43,1	1060	1060 P
A75	75	85	200	56,2	1060	1060 P
A100	100	95	200	74,3	1060	1060 P
A120	120	105	220	100	1060	1060 P
A150	150	150	220	150,3	1060	1060 P
CR104	63,5	127	127	51,59	1060	1060 P
CR105	65,1	131,8	131,8	52,09	1060	1060 P
CR15	76,2	146	131,8	66,97	1060	1060 P
CR171	101,6	152	152,4	84,83	1060	1060 P
CR175	102,4	152,4	152,4	86,4	1060	1060 P
MRS87A	101,6	152,4	152,4	86,8	1060	1060 P
MRS125	120	180	180	125	1060	1060 P
46 E4	65	145	135	46,9	1060	1060 P
49 E1	67	149	125	49,39	1060	1060 P
50 E1	67	148	135	49,9	1060	1060 P
54 E1	70	159	140	54,77	1060	1060 P
60 E1	72	172	150	60,21	1060	1060 P

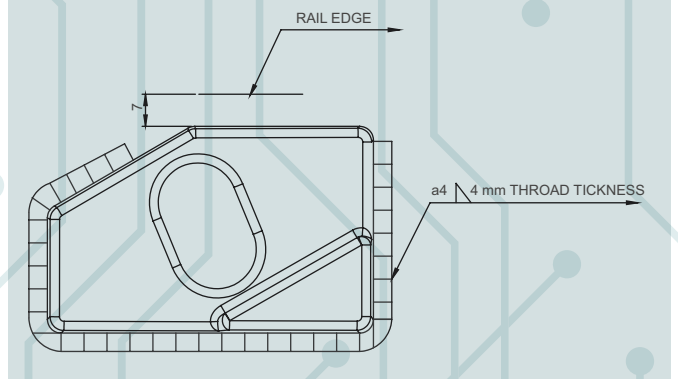
CLIP CAN BE USED WITH MORE TYPE OF RAILS THAN THOSE LISTED.

INSTALLATION INSTRUCTIONS:

Weld all round the clip base, except the side closest and parallel to the rail with a 4 mm throat thickness fillet weld, using low hydrogen electrodes. Recommended electrodes AWS E7018 or E7028. Clip base is made from weldable grade steel. Please consult us for continuous welding requirement.

ELEKTRODE
AWS A5.11-04 E7018-1
EN ISO 2560-A E42 4 B42 H5
CE EN13479
ROD
AWS A5.18 ER70S-6: SG3
EN ISO 1668 W 4Si1: SG3

WELD DETAIL



G-RAIL NO DOUBT ABOUT CRANE RAILS AND FASTENING SYSTEM



Przedstawiciel handlowy w Polsce:

DETRANS
ul. Damrota 2
41-800 Zabrze,
NIP: 6482772915

Jacek Kohn
Telefon: +48 511 973 972
E-mail: j.kohn@detrans.pl

