

## G-RAIL 3010 Bolted Rail Clips

### TECHNICAL SPECIFICATIONS

- Max side load 60 kN
- Lateral adjustment 10 mm
- Bolt M16 Grade 8.8
- Tightening Torque 200 Nm
- Steel Quality St52-3

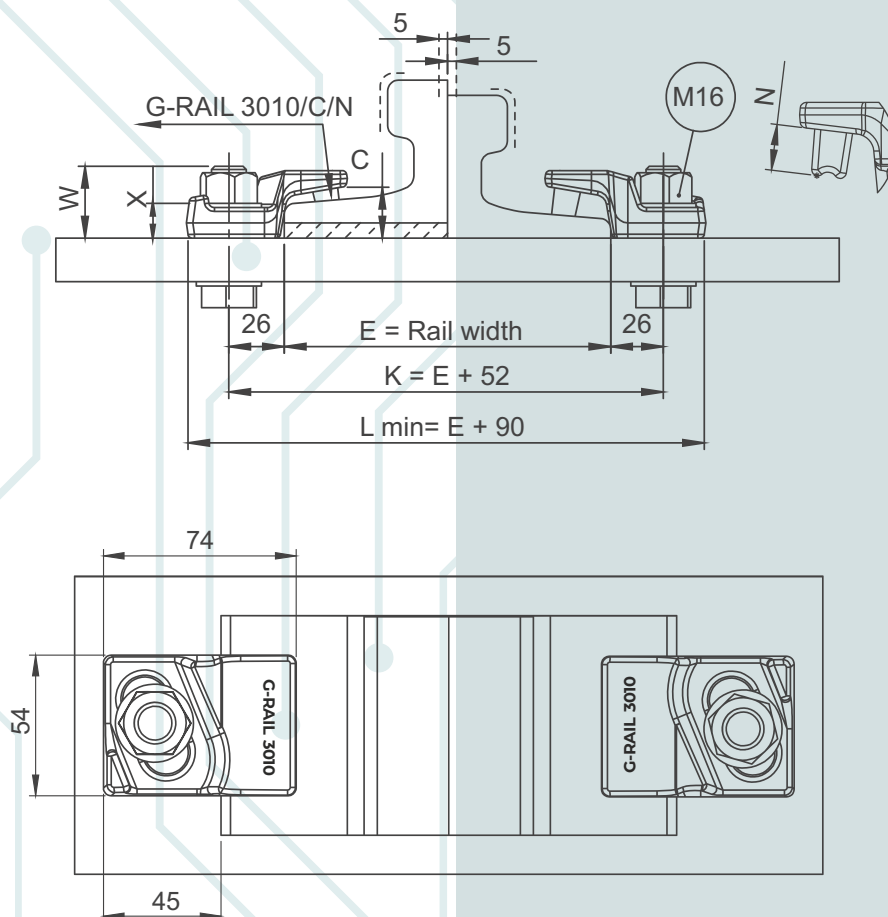
| CLIPS NO            | X  | C  | W  | N    | Weight (Kg) |
|---------------------|----|----|----|------|-------------|
| G-RAIL 43010/24/16  | 14 | 24 | 35 | 16   | 0,390       |
| G-RAIL 3010/24/10,5 | 14 | 24 | 35 | 10,5 | 0,380       |

### MAIN FEATURES

1. G-RAIL 3010 bolted rail clip, which is produced from a forged part, enables ease of assembly thanks to its special design.
2. The clips can be preferred for rails with or without pads.
3. The main part is locked to rail with special bolt.
4. The rubber nose increases the tolerances of the rail support structures, reduces the stress of the connections, allows a better fixing of the rail.

#### 1 RAIL WITH PAD

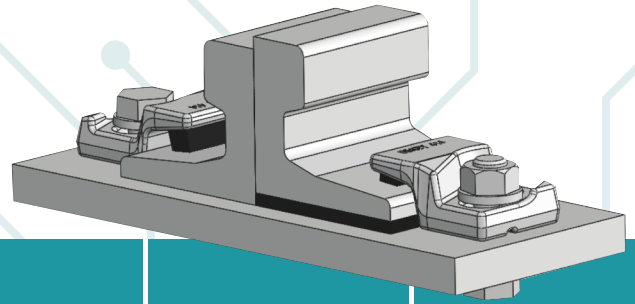
#### 2 RAIL WITHOUT PAD

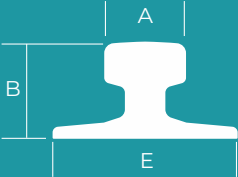


Flange nut can also be used on request.  
Please consult us for using flange nut.

# 3010

## G-RAIL 3010 Bolted Rail Clips



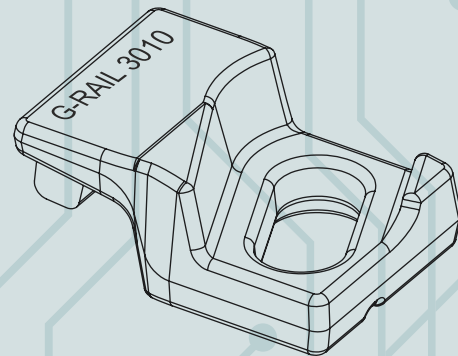
|  | A   | B   | E   | Without Pad | With Pad |
|---|-----|-----|-----|-------------|----------|
|   | A45 | 45  | 55  | 125         | 3010     |
| A55   | 55  | 65  | 150 | 3010        | 3010 P   |
| A65   | 65  | 75  | 175 | 3010        | 3010 P   |
| S14   | 38  | 80  | 70  | 3010        | 3010 P   |
| S20   | 44  | 100 | 82  | 3010        | 3010 P   |
| S30   | 60  | 108 | 108 | 3010        | 3010 P   |
| S41   | 67  | 138 | 125 | 3010        | 3010 P   |
| AFNOR 26  | 50  | 110 | 100 | 3010        | 3010 P   |
| AFNOR 30  | 56  | 126 | 100 | 3010        | 3010 P   |
| ASCE 60   | 60  | 108 | 106 | 3010        | 3010 P   |
| ASCE 80   | 64  | 127 | 108 | 3010        | 3010 P   |
| ASCE 85   | 65  | 132 | 127 | 3010        | 3010 P   |
| ISCOR 22  | 50  | 95  | 132 | 3010        | 3010 P   |
| ISCOR 30  | 57  | 110 | 95  | 3010        | 3010 P   |
| JIS 37  | 63  | 122 | 110 | 3010        | 3010 P   |
| JIS 40  | 64  | 140 | 122 | 3010        | 3010 P   |
| 15 kg / m BHP   | 43  | 79  | 122 | 3010        | 3010 P   |
| 22 kg / m BHP   | 51  | 94  | 135 | 3010        | 3010 P   |

CLIP CAN BE USED WITH MORE TYPE OF RAILS THAN THOSE LISTED.

### INSTALLATION INSTRUCTIONS:

The main component is first positioned on the bolt against the rail and the special washer is then positioned on the main component. The nut is hand tightened. Hammer is used for tighter contact. The main component is in position, use an electrical or pneumatic wrench to torque the nut. Please contact G-RAIL for full installation instructions.

### WELD DETAIL



## G-RAIL NO DOUBT ABOUT CRANE RAILS AND FASTENING SYSTEM



Przedstawiciel handlowy w Polsce:

DETRANS  
ul. Damrota 2  
41-800 Zabrze,  
NIP: 6482772915

Jacek Kohn  
Telefon: +48 511 973 972  
E-mail: j.kohn@detrans.pl

