

G-RAIL 1070 Welded Rail Clips

TECHNICAL SPECIFICATIONS


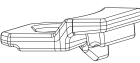


- Max side load 170 kN
- Lateral adjustment 18 mm
- Bolt M20 Grade 8.8
- Tightening Torque 350 Nm
- Steel Quality St52-3

CLIPS NO	X	C	W	N	Weight (Kg)
G-RAIL 1070/31/13	20	31	55	13	1,375
G-RAIL 1070/31/17	20	31	55	17	1,385
G-RAIL 1070/31/24	20	31	55	24	1,395

MAIN FEATURES

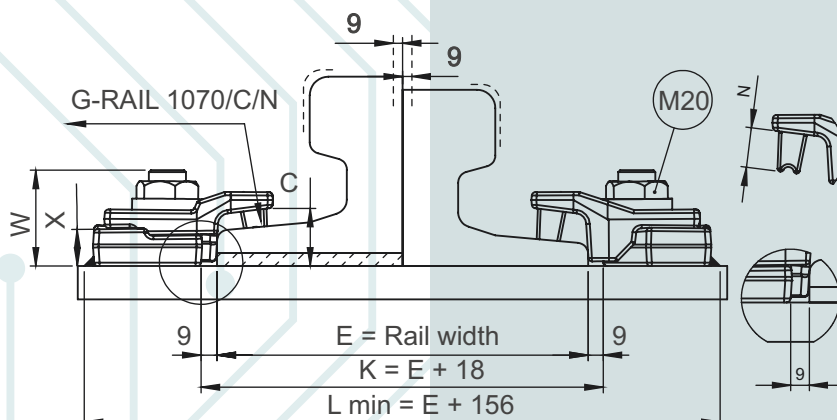
1. G-RAIL 1070 welded rail clips, which are produced from 2 forged parts as upper and lower enables ease of assembly thanks to its special desing.
2. The clips can preferred for rails with or without pads.
3. The two main parts are locked together with special bolt.
4. The rubber nose increases the tolerances of the rail support structures, reduces the stress of the connections, allows a better fixing of the rail.

COMPONENTS

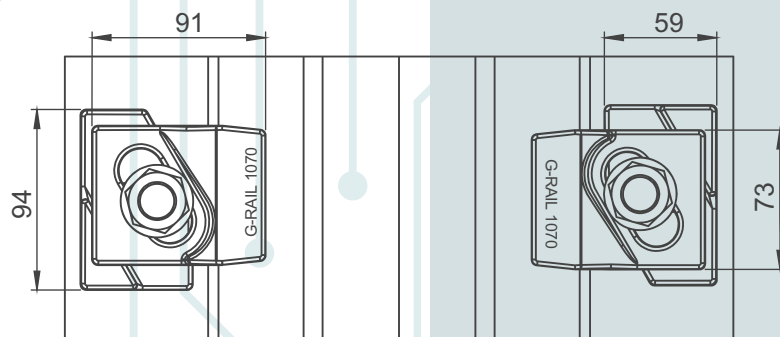
- 
- ① Nut and washer M20
-
- 
- ② Upper clip with rubber nose
-
- 
- ③ Special bolt M20
-
- 
- ④ Weldable lower clip

**Flange nut can also be used on request.
Please consult us for using flange nut.**

1 RAIL WITH PAD

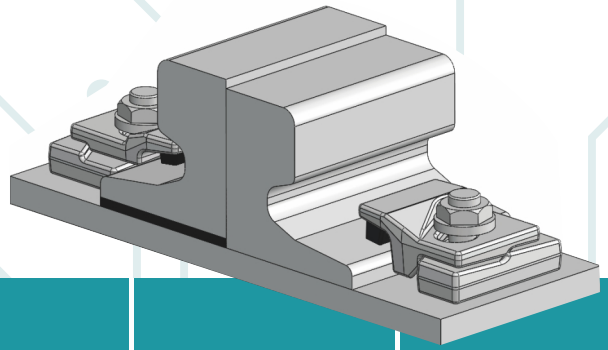


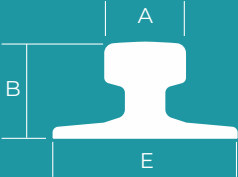
2 RAIL WITHOUT PAD



1070

G-RAIL 1070 Welded Rail Clips



	A	B	E	Weight kg/m	Without Pad	With Pad
A75	75	85	200	56,2	1070	1070 P
A100	100	95	200	74,3	1070	1070 P
A120	120	105	220	100	1070	1070 P
A150	150	150	220	150,3	1070	1070 P
CR105	65,1	131,8	131,8	52,09	1070	1070 P
CR135	76,2	146	131,8	66,97	1070	1070 P
CR171	101,6	152,4	152,4	84,83	1070	1070 P
CR175	102,4	152,4	152,4	86,4	1070	1070 P
MRS87A	101,6	152,4	152,4	86,8	1070	1070 P
MRS125	120	180	180	125	1070	1070 P
49 E1	67	149	125	49,39	1070	1070 P
50 ES	67	148	135	49,9	1070	1070 P
54 E1	70	159	140	54,77	1070	1070 P
60 E1	72	172	150	60,21	1070	1070 P

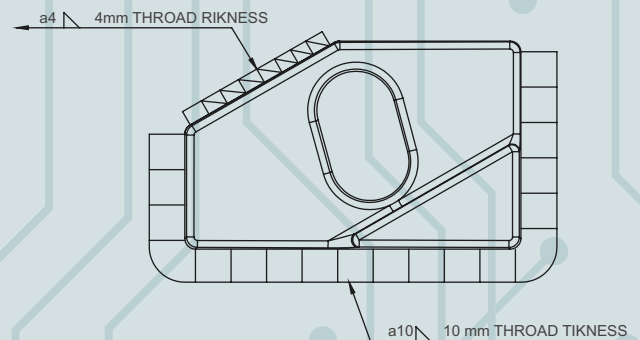
CLIP CAN BE USED WITH MORE TYPE OF RAILS THAN THOSE LISTED.

INSTALLATION INSTRUCTIONS:

Weld all round the clip base, except the side closest and parallel to the rail with a 10 mm throat thickness fillet weld, using low hydrogen electrodes. Recommended electrodes AWS E7018 or E7028. Clip base is made from weldable grade steel. Please consult us for continuous welding requirement.

ELEKTRODE
 AWS A5.11-04 E7018-1
 EN ISO 2560-A E42 4 B42 H5
 CE EN13479
 ROD
 AWS A5.18 ER70S-6:SG3
 EN ISO 1668 W 4Si1:SG3

WELD DETAIL



G-RAIL NO DOUBT ABOUT CRANE RAILS AND FASTENING SYSTEM



Przedstawiciel handlowy w Polsce:

DETRANS
 ul. Damrota 2
 41-800 Zabrze,
 NIP: 6482772915

Jacek Kohn
 Telefon: +48 511 973 972
 E-mail: j.kohn@detrans.pl

