

G-RAIL 2050 Welded Rail Clips

TECHNICAL SPECIFICATIONS

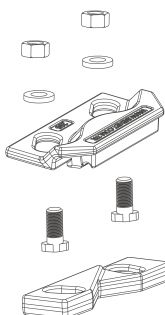
- Max side load 170 kN
- Lateral adjustment 16 mm
- Bolt M16 Grade 8.8
- Tightening Torque 175 Nm
- Steel Quality St52-3

CLIPS NO	X	C	W	N	Weight (Kg)
G-RAIL 2050/28/12	18	28	45	12	1,420
G-RAIL 2050/28/18	18	28	45	18	1,440
G-RAIL 2050/28/22,5	18	28	45	22,5	1,490

MAIN FEATURES

1. G-RAIL 2050 welded rail clips, which are produced from 2 forged parts as upper and lower enables ease of assembly thanks to its special desing.
2. The clips can preferred for rails with or without pads.
3. The two main parts are locked together with special bolt.
4. The rubber nose increases the tolerances of the rail support structures, reduces the stress of the connections, allows a better fixing of the rail.

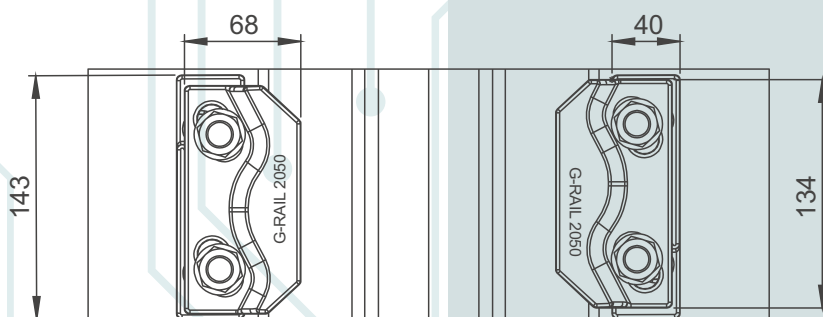
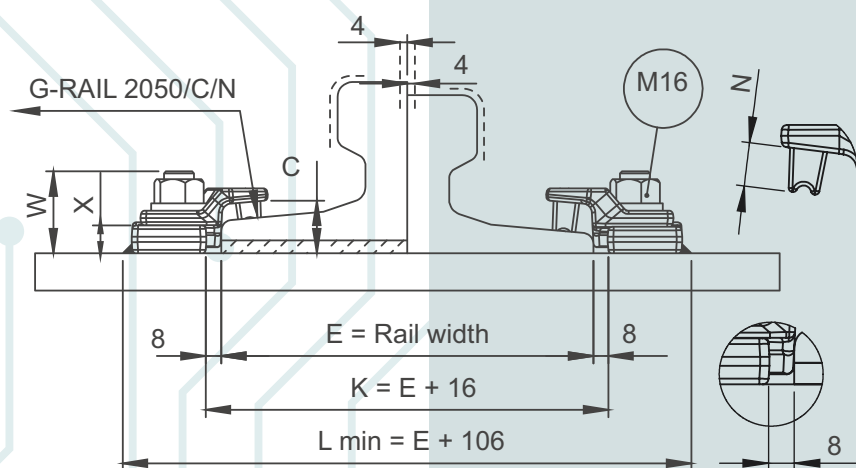
COMPONENTS

- 
- ① Nut and washer M16
 - ② Upper clip with rubber nose
 - ③ Special bolt M16
 - ④ Weldable lower clip

**Flange nut can also be used on request.
Please consult us for using flange nut.**

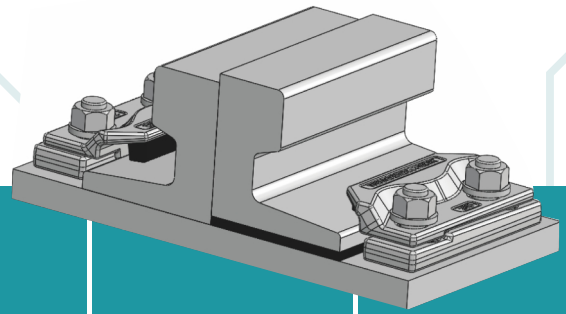
1 RAIL WITH PAD

2 RAIL WITHOUT PAD



2050

G-RAIL 2050 Welded Rail Clips



	A	B	E	Weight kg/m	Without Pad	With Pad
A45	45	55	125	22,1	2050	2050 P
A55	55	65	150	31,8	2050	2050 P
A65	65	75	175	43,1	2050	2050 P
A75	75	85	200	56,2	2050	2050 P
A100	100	95	200	74,3	2050	2050 P
A120	120	105	220	100	2050	2050 P
CR 104	63,5	127	127	51,59	2050	2050 P
CR 105	65,1	131,8	131,8	52,09	2050	2050 P
CR 135	76,2	146	131,8	66,97	2050	2050 P
S 24	53	115	90	22,43	2050	2050 P
25 kg/m	50	115	90	25	2050	2050 P
AFNOR 30	56	125,5	106	29,98	2050	2050 P
30 E1	60,3	108	108	30,13	2050	2050 P
33 E1	58	134	105	33,47	2050	2050 P
36 E1	60	130	100	36,26	2050	2050 P
40 E1	67	138	125	40,95	2050	2050 P
46 E4	65	145	135	46,9	2050	2050 P
49 E1	67	149	125	49,39	2050	2050 P
50 ES	67	148	135	49,9	2050	2050 P
54 E1	70	159	140	54,77	2050	2050 P

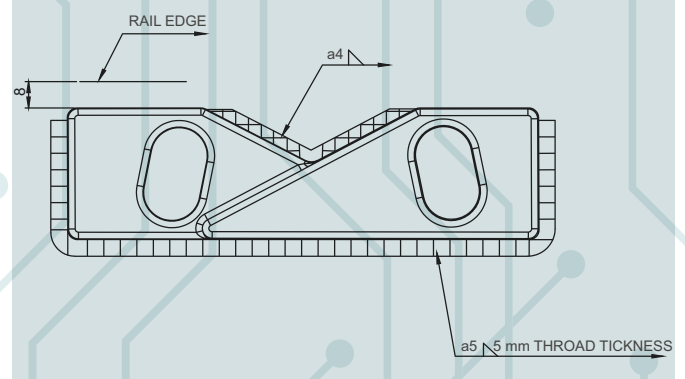
CLIP CAN BE USED WITH MORE TYPE OF RAILS THAN THOSE LISTED.

INSTALLATION INSTRUCTIONS:

Weld all round the clip base, except the side closest and parallel to the rail with a 5 mm throat thickness fillet weld, using low hydrogen electrodes. Recommended electrodes AWS E7018 or E7028. Clip base is made from weldable grade steel. Please consult us for continuous welding requirement.

ELEKTRODE
 AWS A5.11-04 E7018-1
 EN ISO 2560-A E42 4 B42 H5
 CE EN13479
 ROD
 AWS A5.18 ER70S-6:SG3
 EN ISO 1668 W 4Si1:SG3

WELD DETAIL



G-RAIL NO DOUBT ABOUT CRANE RAILS AND FASTENING SYSTEM



Przedstawiciel handlowy w Polsce:

DETRANS
 ul. Damrota 2
 41-800 Zabrze,
 NIP: 6482772915

Jacek Kohn
 Telefon: +48 511 973 972
 E-mail: j.kohn@detrans.pl

